



# MASTER PLAN

## MORRIS ELEMENTARY SCHOOL CYPRESS SCHOOL DISTRICT STAFF PRESENTATION

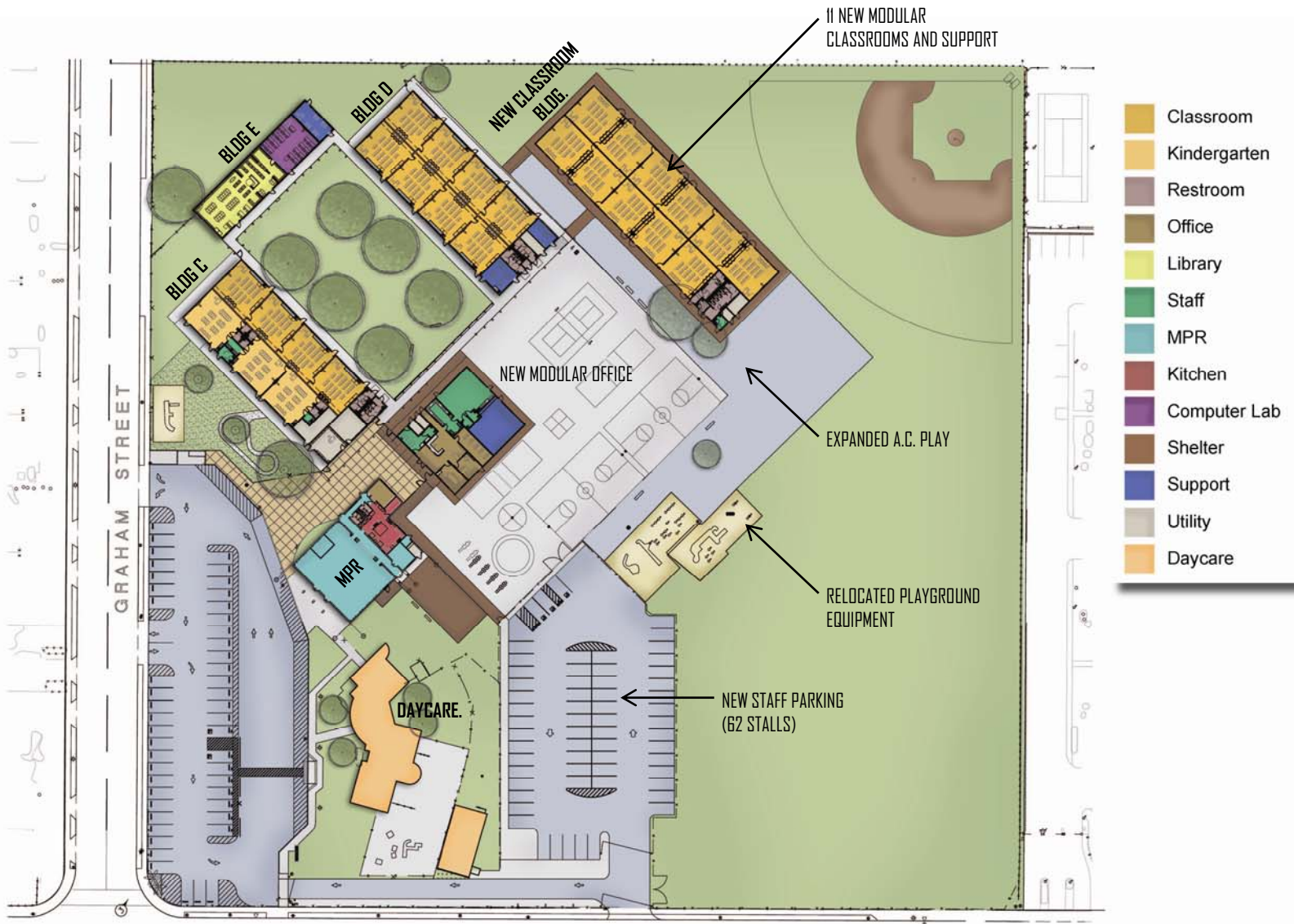
FEBRUARY 07, 2011  
PREPARED BY



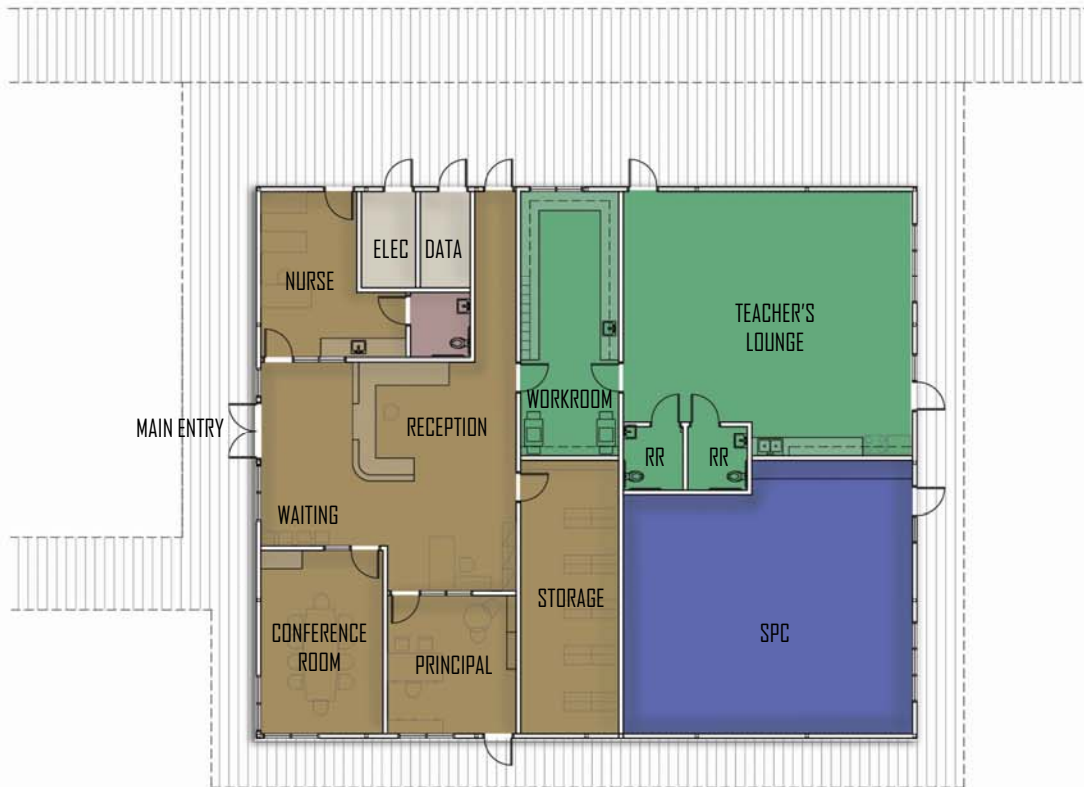
130 South B Street  
Tustin, CA 92780  
714-665-8030



EXISTING OVERALL SITE PLAN



PROPOSED OVERALL SITE PLAN



- Classroom
- Kindergarten
- Restroom
- Office
- Library
- Staff
- MPR
- Kitchen
- Computer Lab
- Shelter
- Support
- Utility
- Daycare

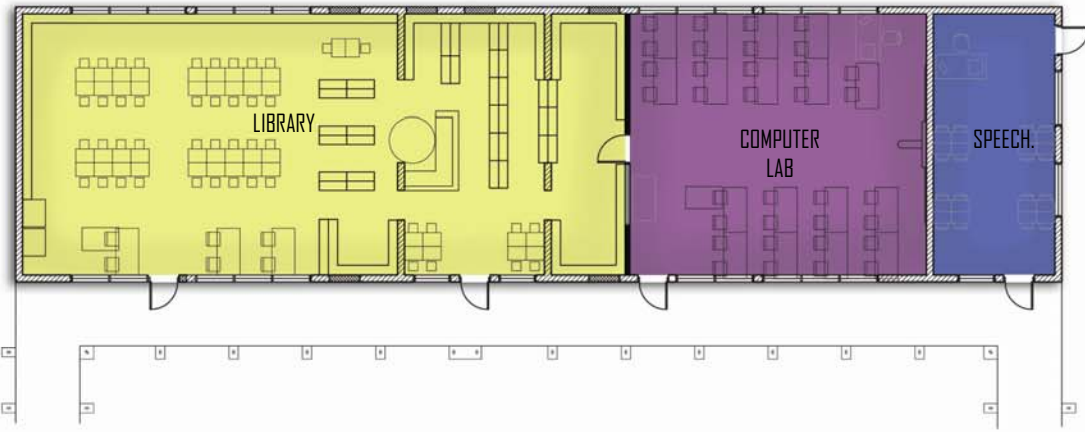
# NEW ADMINISTRATION BUILDING



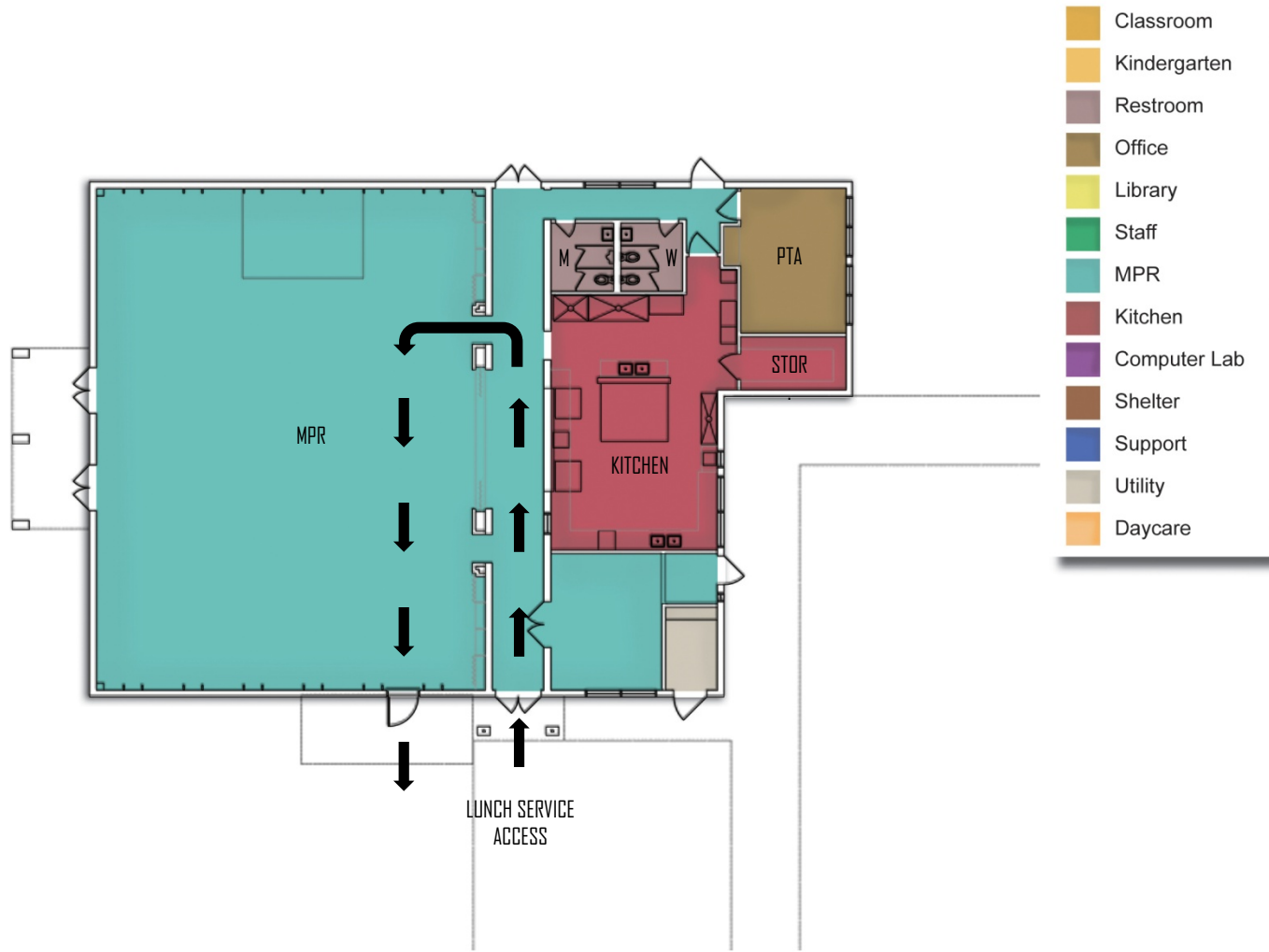
- Classroom
- Kindergarten
- Restroom
- Office
- Library
- Staff
- MPR
- Kitchen
- Computer Lab
- Shelter
- Support
- Utility
- Daycare

BLDG C, D & E

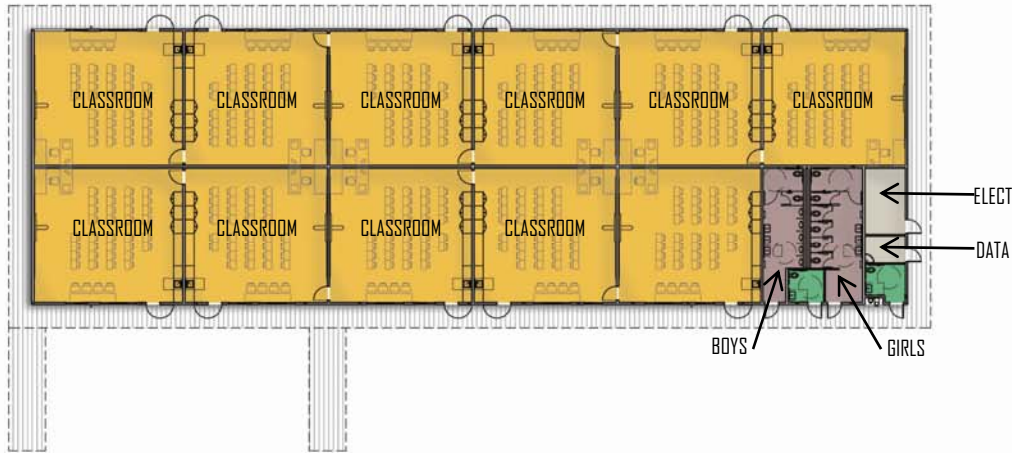
BUILDING E



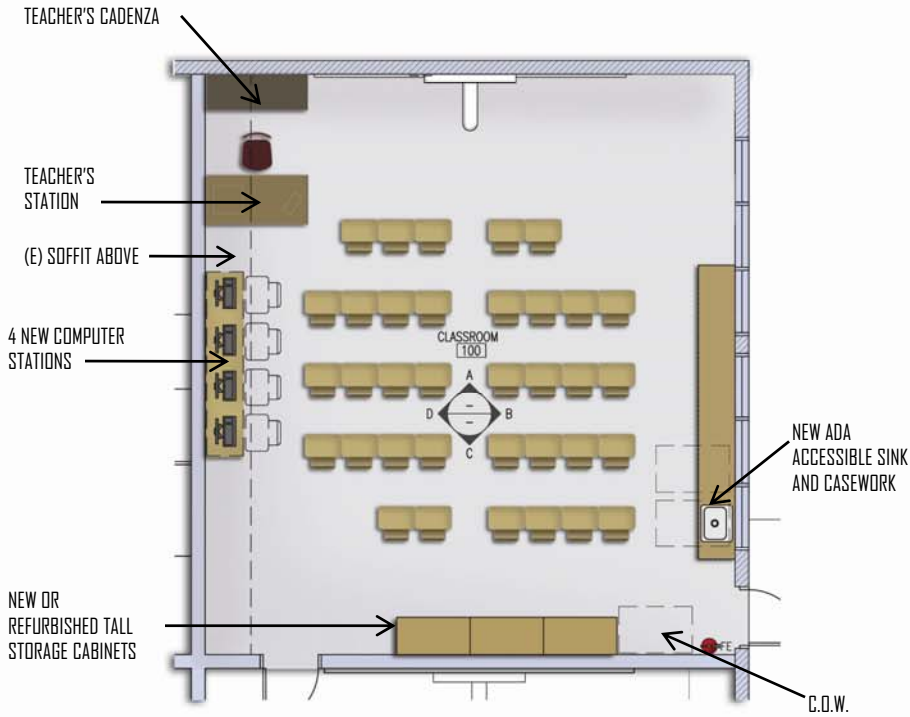
- Classroom
- Kindergarten
- Restroom
- Office
- Library
- Staff
- MPR
- Kitchen
- Computer Lab
- Shelter
- Support
- Utility
- Daycare



# NEW CLASSROOM BUILDING



- Classroom
- Kindergarten
- Restroom
- Office
- Library
- Staff
- MPR
- Kitchen
- Computer Lab
- Shelter
- Support
- Utility
- Daycare



TYPICAL MODERNIZED CLASSROOM FLOOR PLAN  
(NEW MODULAR CLASSROOM SIMILAR)

TACKABLE WALLCOVERING,  
TYPICAL (3) WALLS

